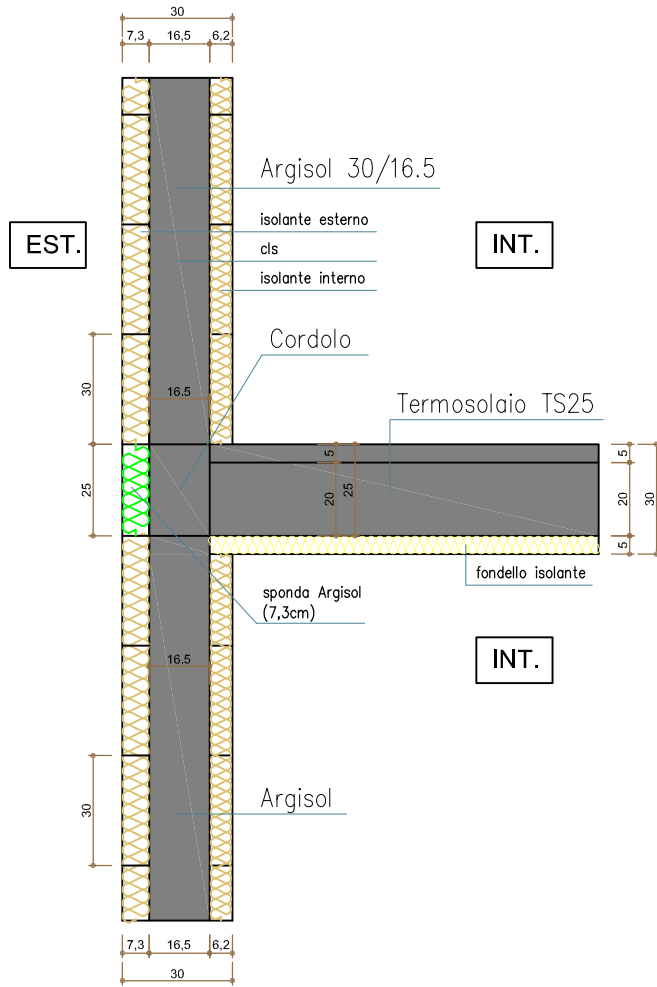


nodo di classe "IF" - intersezione di un solaio (interpiano) con la parete perimetrale
 CORDOLO - TRAVE FUORI SPESSORE - TRAVE A SPESSORE - Argisol 16.5

tipo :
pt_IF

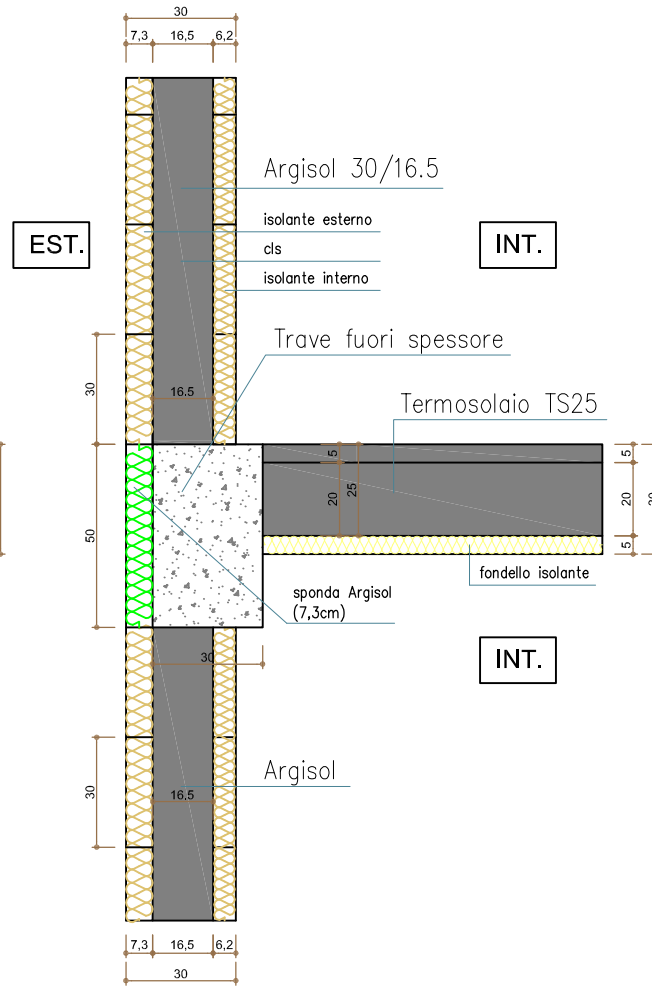


PARETE ARGISOL 30/16.5 - TERMOSOLAIO TS 25
 CORDOLO PERIMETRALE

IF1a

$\psi_i = 0.189 \text{ W/mK}$

$\psi_e = 0.124 \text{ W/mK}$

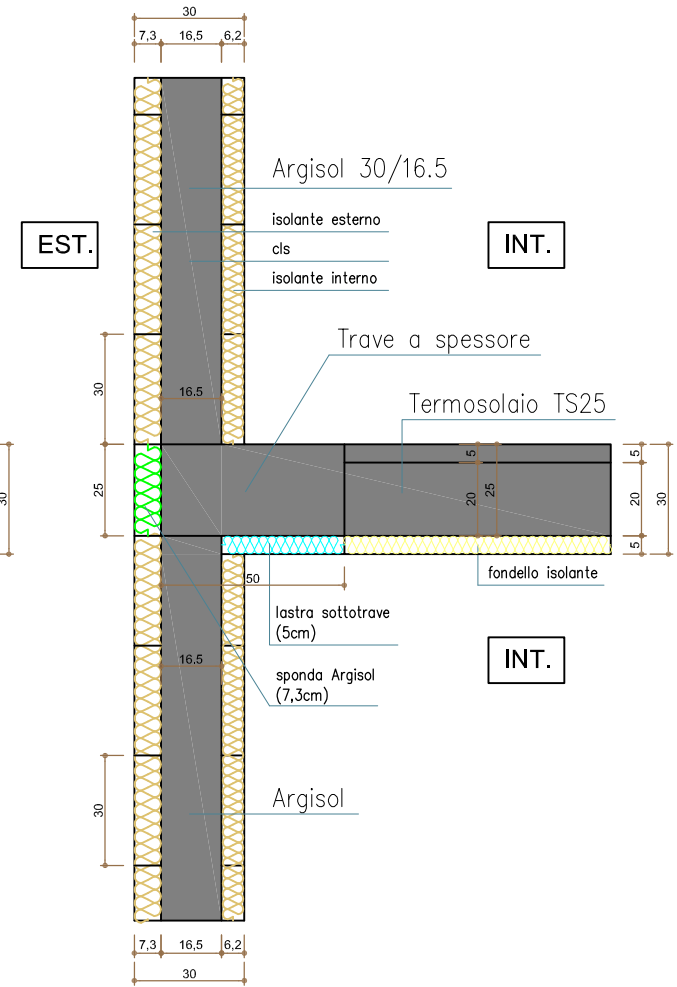


PARETE ARGISOL 30/16.5 - TERMOSOLAIO TS 25
 TRAVE FUORI SPESSORE

IF2a

$\psi_i = 0.249 \text{ W/mK}$

$\psi_e = 0.188 \text{ W/mK}$



PARETE ARGISOL 30/16.5 - TERMOSOLAIO TS 25
 TRAVE A SPESSORE

IF3a

$\psi_i = 0.189 \text{ W/mK}$

$\psi_e = 0.124 \text{ W/mK}$